

# Queen & Mississagua Entrance Project



Kevin Turcotte  
Manager of Parks & Recreation  
Council Meeting, September 27, 2021

# Introduction

## Seferian Design Group



# Queen & Mississauga Entranceway Project

Council Presentation  
September 27 ,2021



**FORT MISSISSAUGA**  
(Tripadvisor.com)



seferian design group





**FORT MISSISSAUGA AERIAL**  
(Marinas.com)





**FORT MISSISSAUGA**  
([Starforts.com](http://Starforts.com))





**FORT MISSISSAUGA STONE ARCHWAY**  
([exploringniagara.com](http://exploringniagara.com))





www.vintage-hotels.com  
669-5566

**DOWNTOWN NIAGARA-ON-THE-LAKE**  
([www.niagarafallstourism.com](http://www.niagarafallstourism.com))



**PILLAR AND POST GARDEN EXPANSION**  
*(Seferian Design Group)*







**PILLAR AND POST GARDEN EXPANSION**  
(Seferian Design Group)





**DRY STACK  
STONE ARCHWAY**  
(Dean McLellan)





**DRY STACK  
STONE ARCHWAY**  
*(Dean McLellan)*

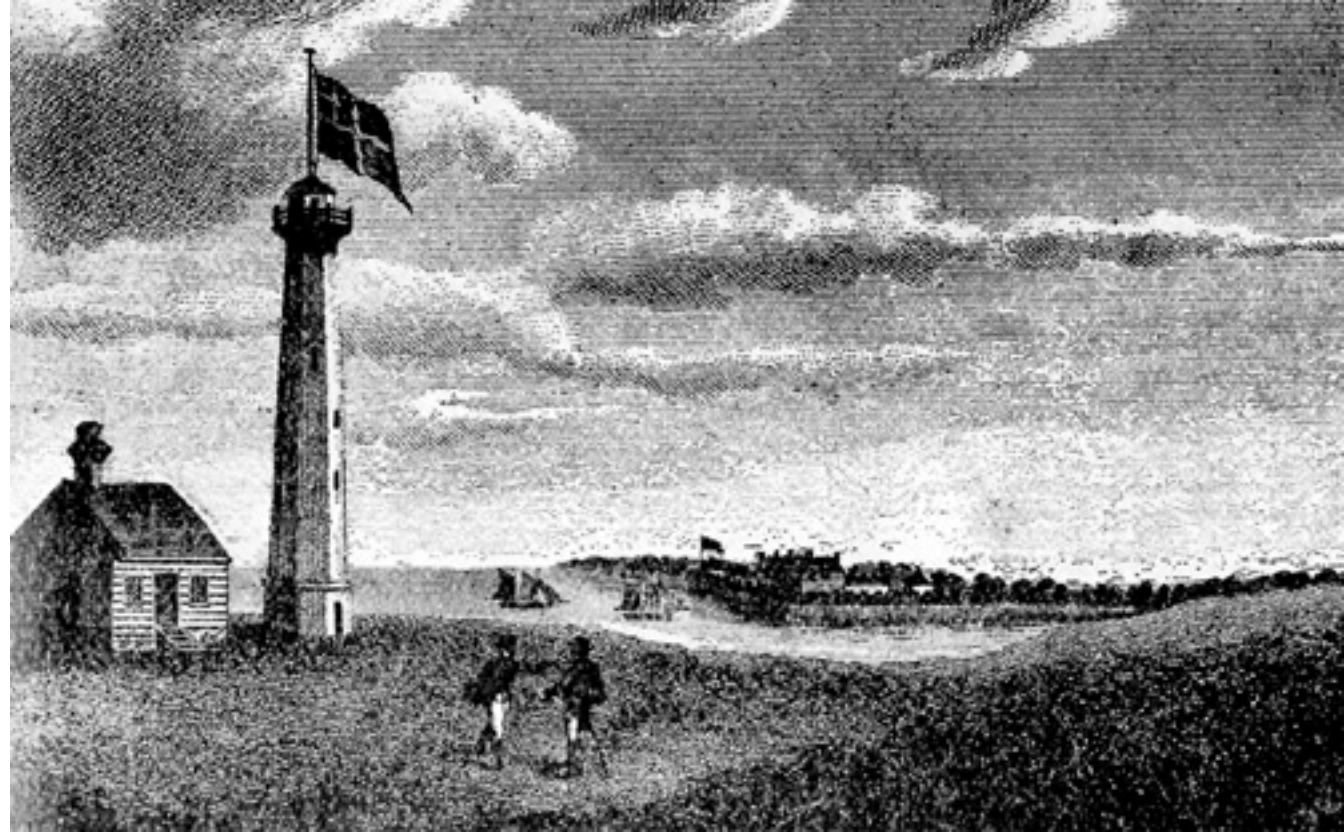
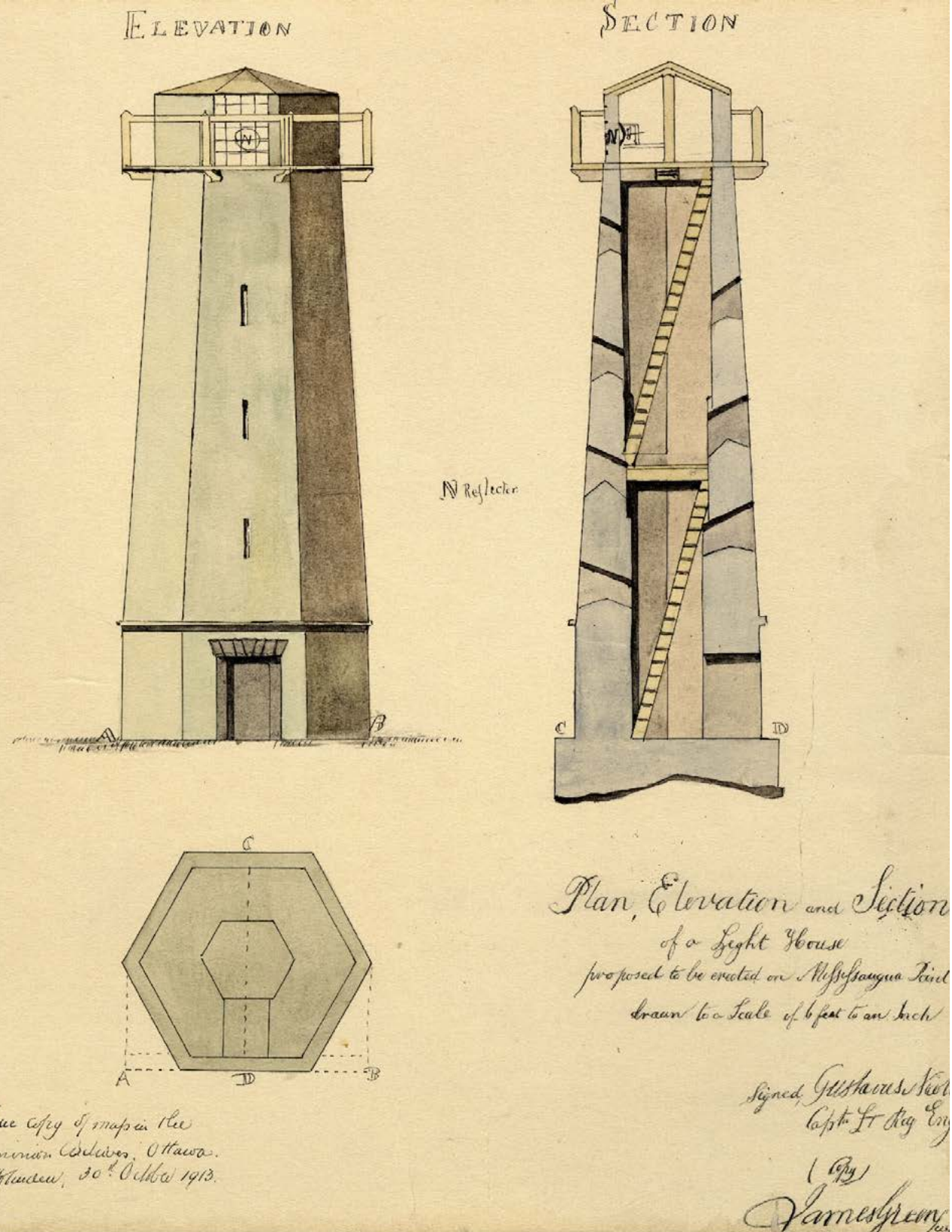




**DRY STACK  
STONE ARCHWAYS**  
(Dean McLellan)







**FIRST LIGHTHOUSE ON THE GREAT LAKES**  
Drawing of Mississauga lighthouse, the first on the Great Lakes.  
(Public Archives of Canada.)

**FIRST LIGHTHOUSE ON THE GREAT LAKES**  
Plan and profile of the Mississauga Point lighthouse 1804.  
(Public Archives of Canada.)



# Existing Site Conditions





***EXISTING SITE CONDITION***

Picture from before the stop bar on  
Mississagua Street Intersection of  
Queen Street and Mississagua Street  
(Seferian Design Group)





**EXISTING SITE CONDITION**

Picture from the backside of the current display bed facing north.

*(Seferian Design Group)*





**EXISTING SITE CONDITION**

Picture from the stop bar on Mississagua  
Street Intersection of Queen Street and  
Mississagua Street  
(Seferian Design Group)



# Proposed (Re)Design



# PROJECT VISION

- The town is known for its rich history, wineries, agriculture and theatre productions.
- Home to many of the Province's most significant cultural heritage resources.
- Inhabited first, by Indigenous peoples, and then, by United Empire Loyalists.
- Famous for strong agricultural heritage of fruit and grape lands.
- The Queen and Mississagua bed has been installed since the early 1980s.
- Annually hosts floral displays with signage that celebrates a community organization or significant Town-related milestones.

*In December of 2019, the Town received a proposal from Mr. Gerry Kowalchuk. His vision was to improve the Queen and Mississagua bed to function as formal gateway to the Heritage District. The vision for the gateway project was based on the following four principles in which, upon completion, should exhibit:*

- **A Striking First Impression** that results in a lasting positive impression beneficial to the Town of Niagara-on-the-Lake;
- **A Symbolic Representation** of the visual beauty of Niagara-on-the-Lake that complements and enhances the Town's image;
- **A Gateway** to the Heritage District; and
- **Landscaping Excellence** that reflects innovation, horticultural integrity, and creativity.



# CONCEPT DESIGN SUMMARY

- The proposed Entry Feature will reflect the cultural heritage values of the Town.
- Will increase the visibility of this gateway to the Heritage District.
- Act as a landmark that meets the needs and wants of community members, supports downtown growth, and inspires the public.
- Four season interest.
- Strong horizontal scale that is constructed from natural dry stone walls to characterize the rich cultural history and architecture of Fort Mississauga.
- The stone composition is intended to be dry stacked Whirlpool sandstone or Queenston limestone (indigenous to the area).
- The horizontal scale is balanced by a vertical element consisting of a striking, iconic form which conceptually represents local boundary marker stones and the Mississagua Point Lighthouse- the first lighthouse on the Great Lakes.
- The entire gateway is surrounded by plantings signifying horticultural excellence echoing the current town plantings.
- Enhanced intersection paving treatments and pedestrian crosswalk upgrades have been proposed.
- Plaza spaces have been included on the south corners with seasonal planters, paving enhancements, seating and lighting.



# WHAT WE HEARD (from “Join the Conversation”)

## 1. THE OBELISK

- 75.6% of the survey respondents do not support the Obelisk as presented. However, 24.4% do support it.
- Of the 75.6%, many respondents prefer LESS PROMINENT, while another group of respondents prefer the Obelisk to be SHORTER

## 2. THE WALL MATERIAL

- Dry stone is the clear preferred choice of material at 51% versus 36% for Limestone

## 3. THE PROPOSED MESSAGE ON THE ENTRY WALL

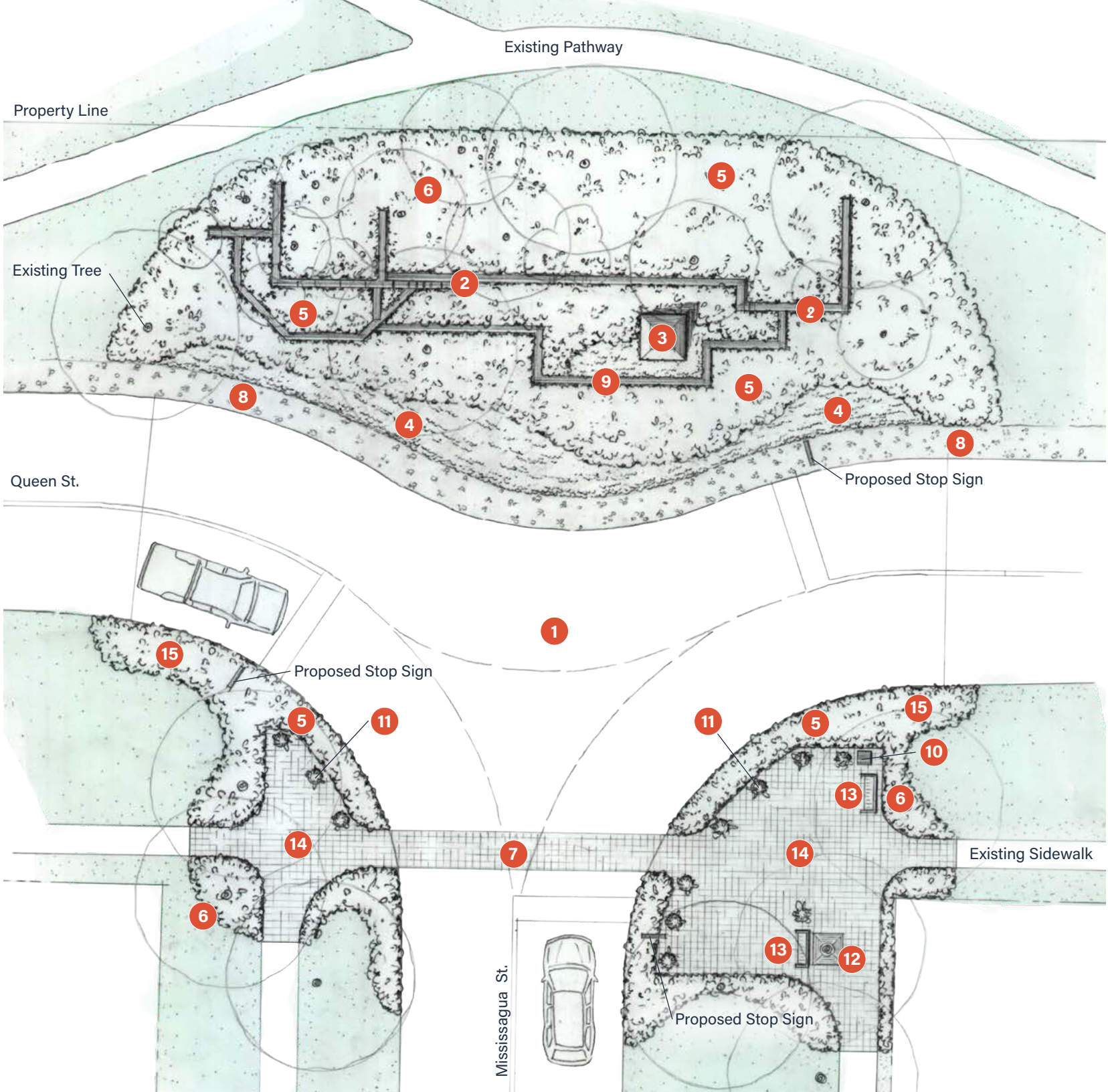
- The majority of respondents (37.4%) support *Niagara on the Lake Heritage District*

## THE RE-DESIGN

1. A DRY STONE WALL TO REFLECT A “HERITAGE APPEARANCE”
2. CHANGES TO THE VERTICAL ELEMENT TO REFLECT A DIFFERENT SCALE
3. A SECOND OPTION WHICH DOES NOT INCLUDE THE OBELISK



# PLAN VIEW



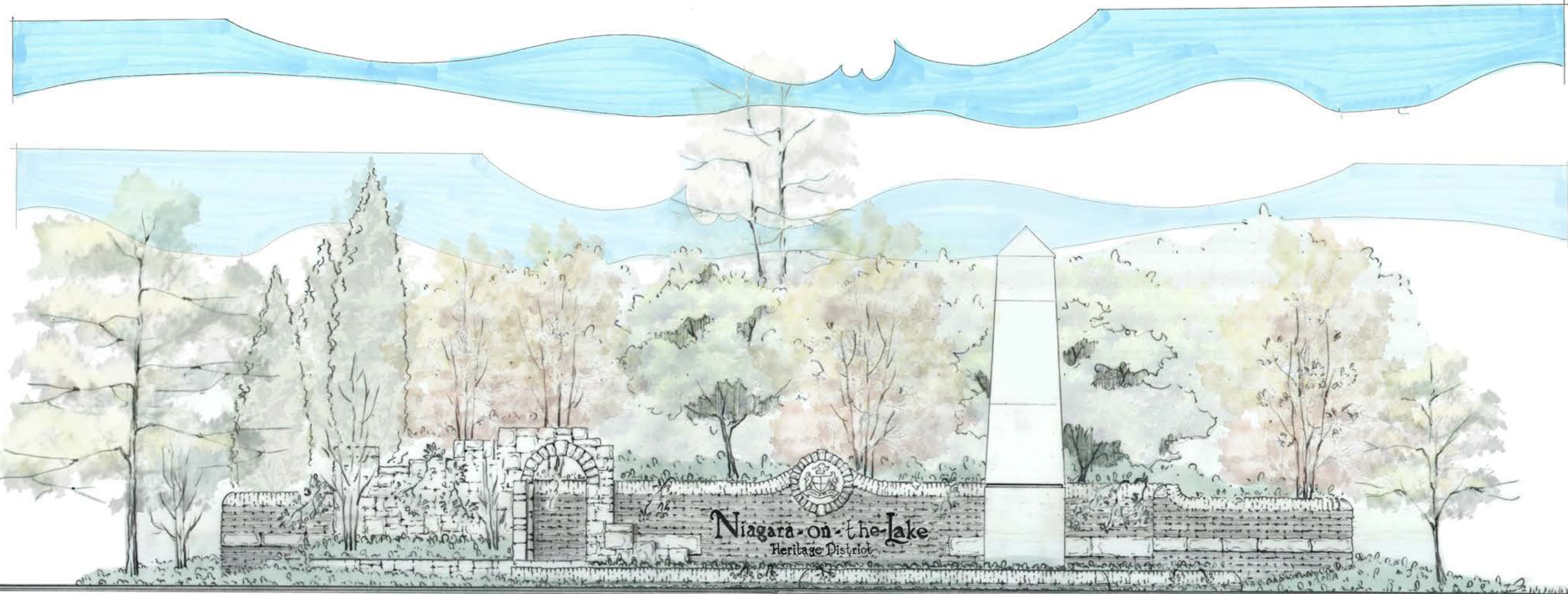
## LEGEND

- 1 Asphalt Roadway
- 2 Dry Stack Stone Wall
- 3 Vertical Element
- 4 Ground Cover Planting
- 5 Horticultural Shrub and Perennial Plantings
- 6 Proposed Trees
- 7 Proposed Crosswalk
- 8 Granular Road Shoulder
- 9 Niagara-on-the-Lake Sign and Crest
- 10 Information Kiosk
- 11 Raised Planters (Annuals)
- 12 Tree Grate
- 13 Bench Seating
- 14 Plaza Paving
- 15 Planter Buffer to Discourage Walking across Queen St



1:100

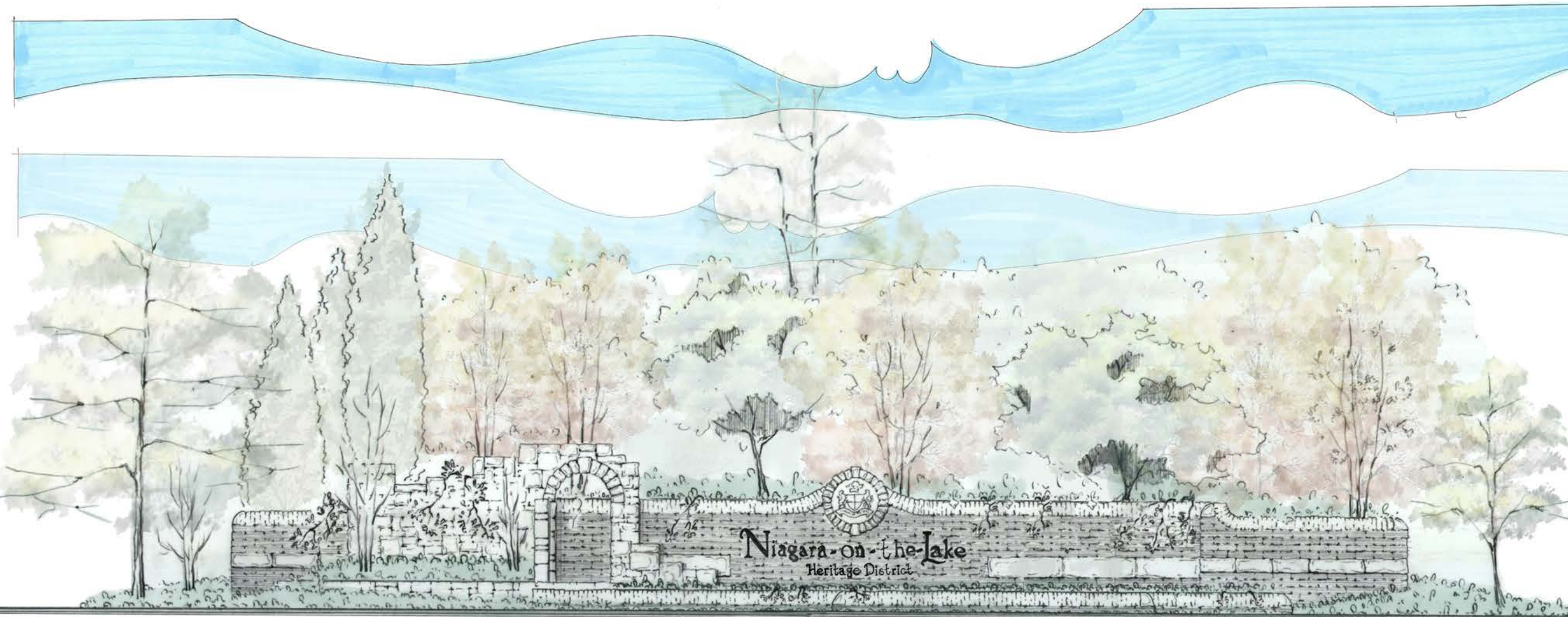




# SECTION

OPTION 1





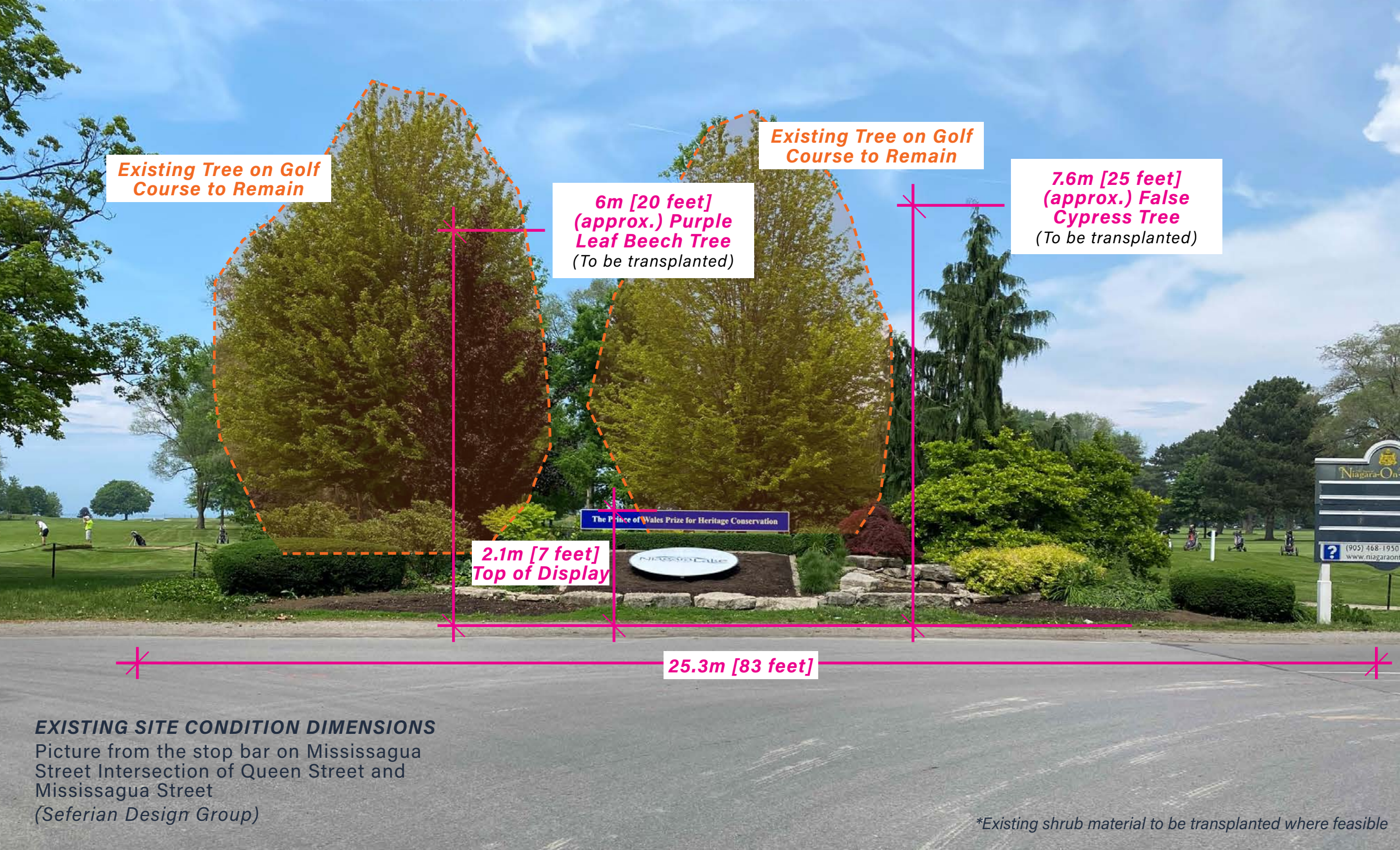
# SECTION

OPTION 2



# Project Scale





Existing Tree on Golf Course to Remain

6m [20 feet] (approx.) Purple Leaf Beech Tree (To be transplanted)

Existing Tree on Golf Course to Remain

7.6m [25 feet] (approx.) False Cypress Tree (To be transplanted)

2.1m [7 feet] Top of Display

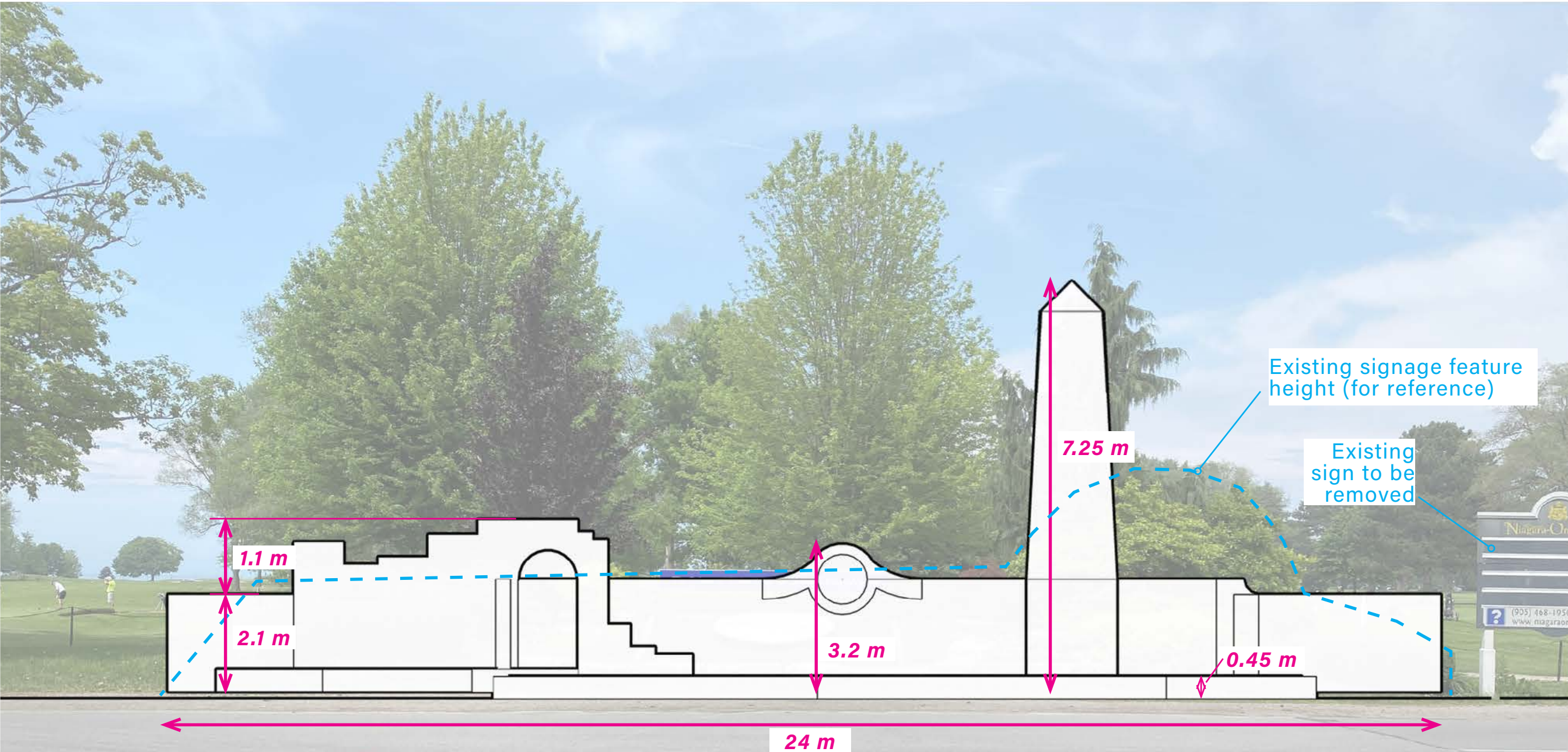
25.3m [83 feet]

**EXISTING SITE CONDITION DIMENSIONS**

Picture from the stop bar on Mississagua Street Intersection of Queen Street and Mississagua Street  
(Seferian Design Group)

\*Existing shrub material to be transplanted where feasible



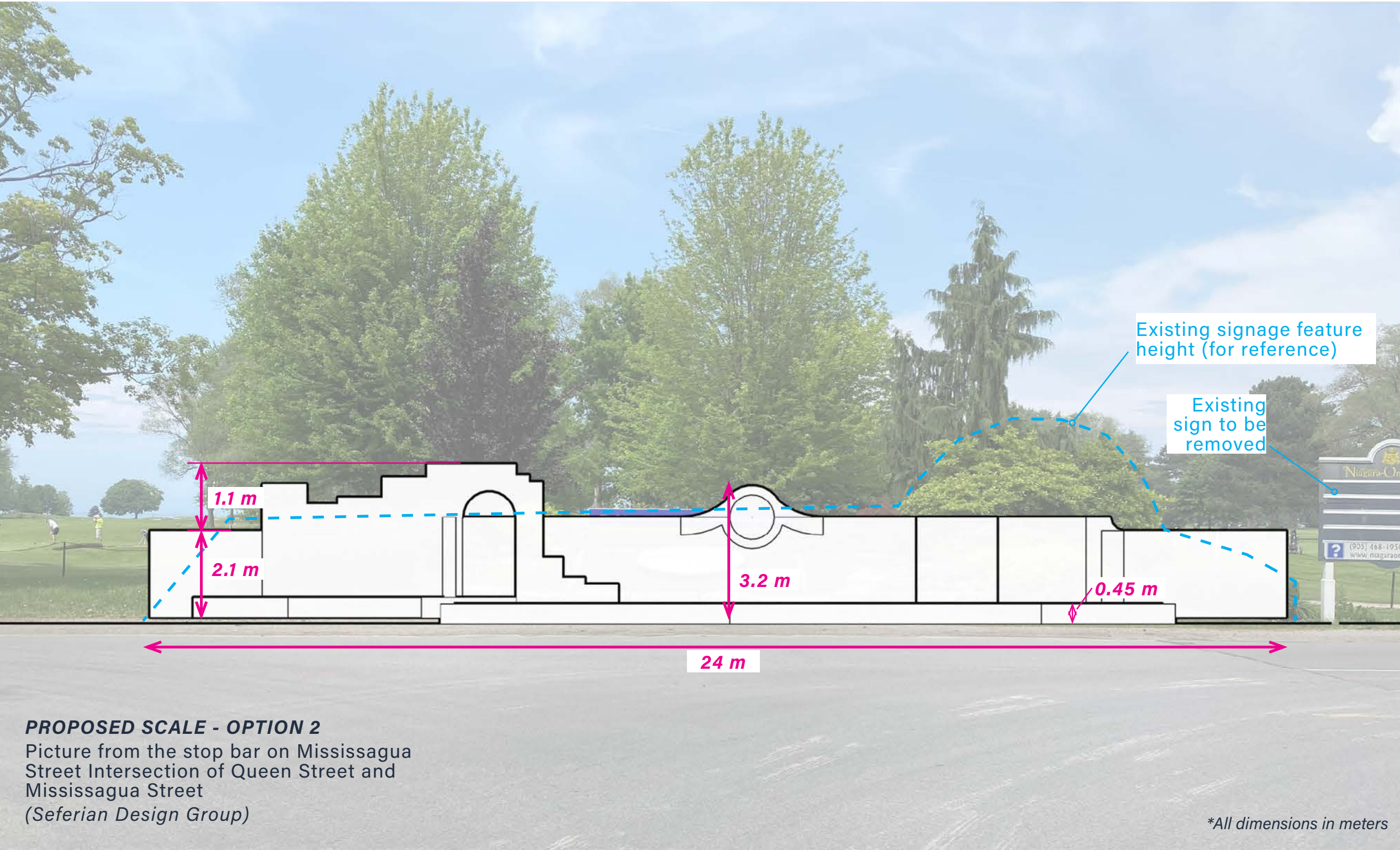


### **PROPOSED SCALE - OPTION 1**

Picture from the stop bar on Mississauga  
Street Intersection of Queen Street and  
Mississauga Street  
(Seferian Design Group)

*\*All dimensions in meters*





Existing signage feature height (for reference)

Existing sign to be removed

1.1 m

2.1 m

3.2 m

0.45 m

24 m

### PROPOSED SCALE - OPTION 2

Picture from the stop bar on Mississauga Street Intersection of Queen Street and Mississauga Street  
(Seferian Design Group)

\*All dimensions in meters



# Council Options

1. Select design option #1 – option with the Obelisk
2. Select design option #2 – option without the Obelisk
3. Not to move forward on the project – we have direction from Council to move forward, so we would need direction to stop.