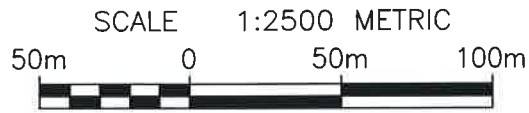


PRELIMINARY SKETCH TO ACCOMPANY AN APPLICATION UNDER THE PLANNING ACT

**PART OF TOWNSHIP LOT 19**  
(GEOGRAPHIC TOWNSHIP OF NIAGARA)  
**TOWN OF NIAGARA-ON-THE-LAKE**  
REGIONAL MUNICIPALITY OF NIAGARA

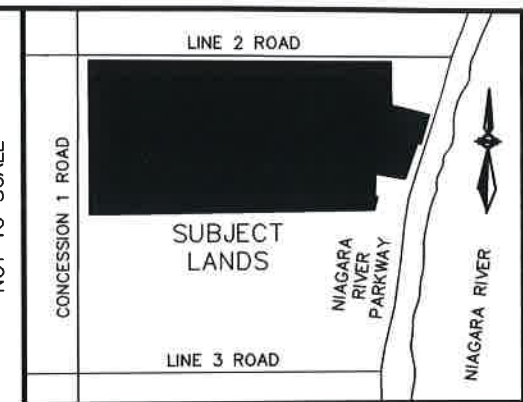


**LINE 2 ROAD**

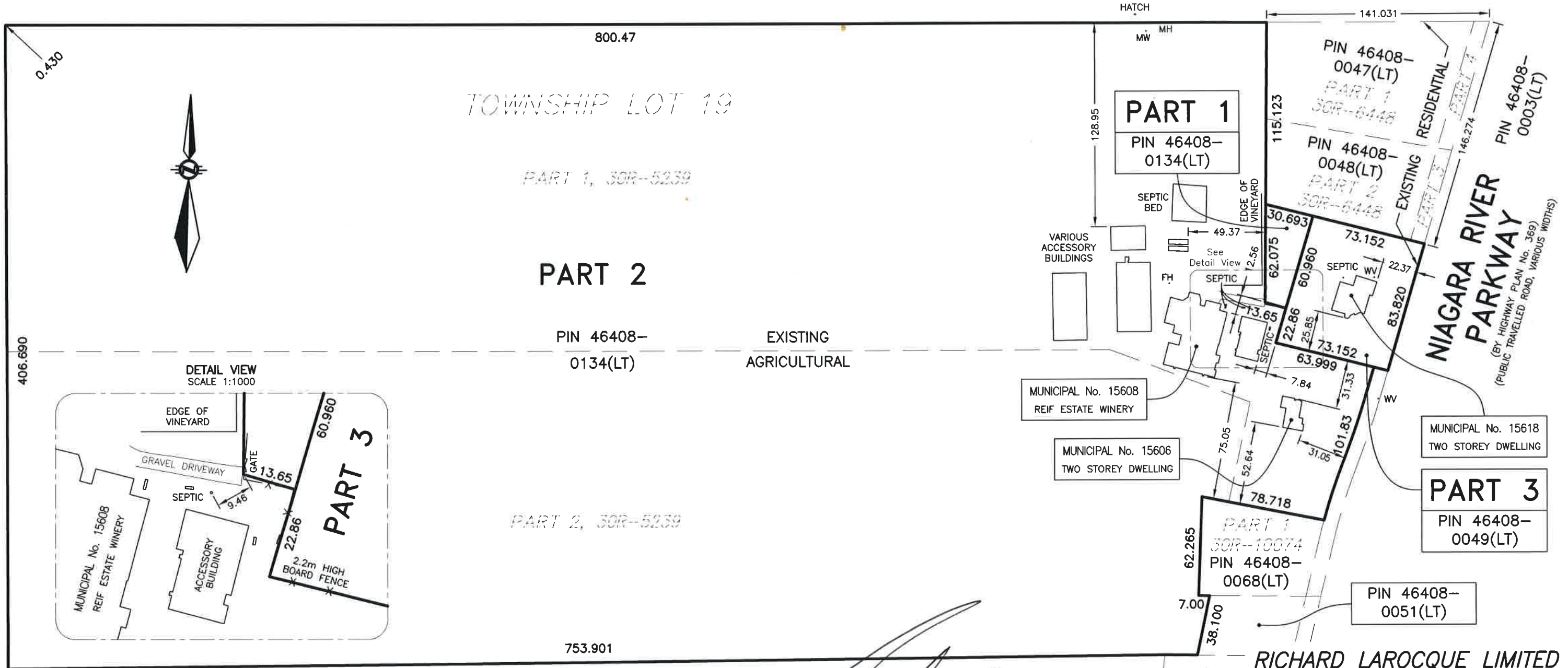
(AS LOCALLY KNOWN)  
(ROAD ALLOWANCE BETWEEN TOWNSHIP LOTS 19 & 20)  
(PUBLIC TRAVELLED ROAD, 20.117 WIDE)  
PIN 46408-0045(LT)

AREA SCHEDULE	
DESCRIPTION	AREA (m <sup>2</sup> )
PART 1	1,341.8
PART 2	323,667.0
PART 3	6,124.9

KEY PLAN  
NOT TO SCALE



PIN 46408-0001(LT)  
CONCESSION 1 ROAD  
(AS LOCALLY KNOWN)  
(PUBLIC TRAVELLED ROAD, VARIOUS WIDTHS)



*[Signature]*  
O.L.S.  
APRIL 17, 2024 BRENT LAROCQUE

**RICHARD LAROCQUE LIMITED**  
ONTARIO LAND SURVEYORS & CONSULTANTS  
12 LYMAN STREET, ST. CATHARINES, ONTARIO  
905-688-1413  
6385 COLBORNE STREET, NIAGARA FALLS, ONTARIO  
905-358-8400  
www.larocquegroup.ca

THIS SKETCH IS PREPARED FOR AN APPLICATION UNDER THE PLANNING ACT AND ALL DIMENSIONS ARE TO BE CONFIRMED BY SURVEY.

**NOTE:** THE LOT DIMENSIONS ILLUSTRATED HEREON WERE OBTAINED FROM PLANS AND DOCUMENTS ON FILE AT THE LAND REGISTRY OFFICE

**METRIC NOTE** DISTANCES SHOWN ON THIS PLAN ARE IN METRES AND CAN BE CONVERTED TO FEET BY DIVIDING BY 0.3048.

© RICHARD LAROCQUE LIMITED  
No person may copy, reproduce or alter this plan in whole or in part without the written permission of RICHARD LAROCQUE LIMITED

DRAWN BY:  
D.B.

CHECKED BY:  
B.L

DATE:  
APR. 17, 2024

FILE: 2021-015A  
DWG. FILE: 2021-015A-04