



Rand Estate

Presentation to Municipal Heritage Committee

April 12, 2023

ERA



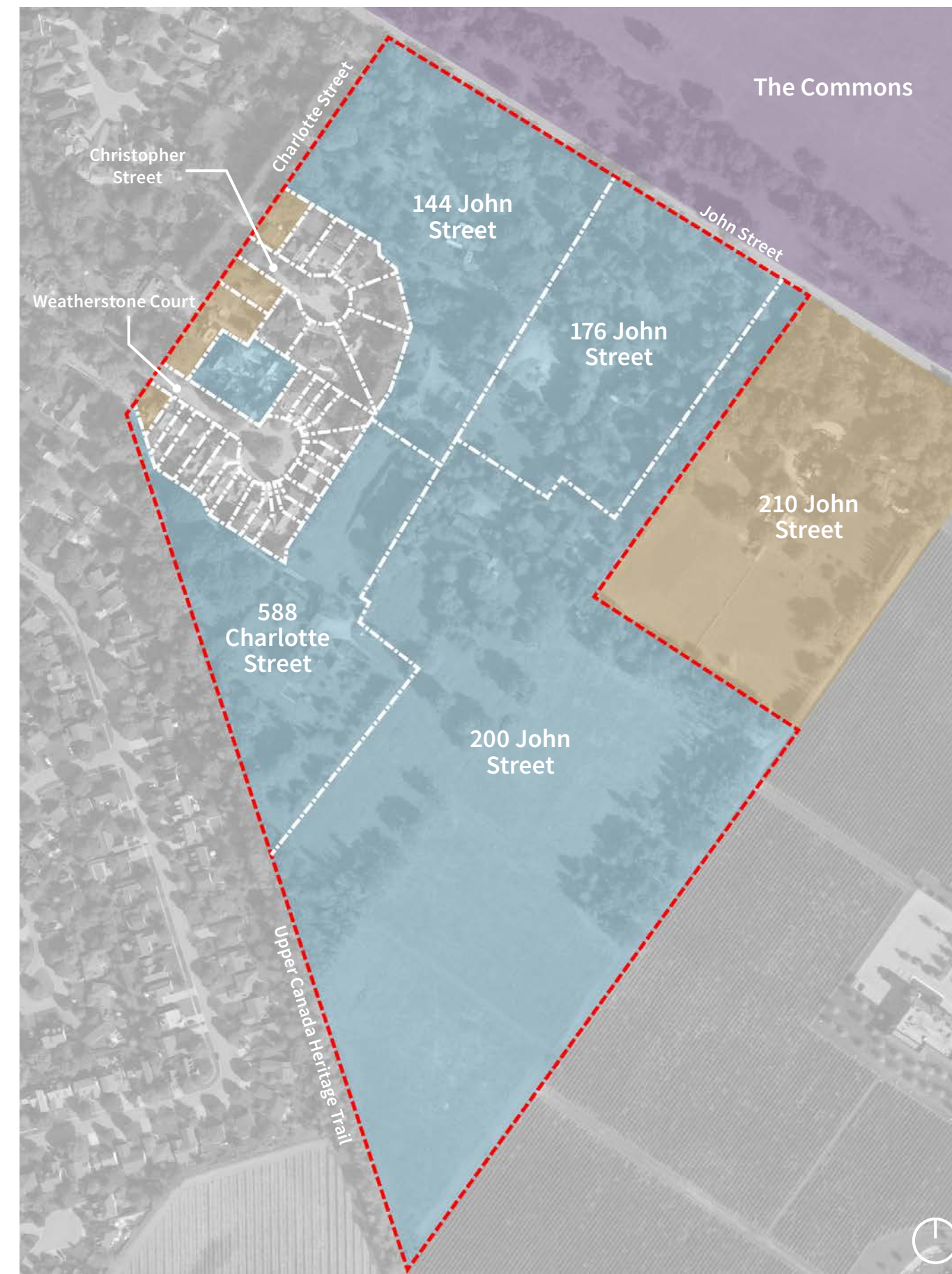
Randwood, 1920 (Source: Brock University Archives).



Aerial map showing the location of the Rand Estate in Niagara-on-the-Lake and indicating key elements and sites in its surrounding context (Source: Google/ERA).



Aerial photo of the Rand Estate, 2018 (Source: Google/ERA).



Aerial map indicating present-day property boundaries within the Rand Estate, as well as heritage recognitions within and adjacent to the estate (Source: Google/ERA).

- - - - - Rand Estate Boundary
- Designated Heritage Properties (Part IV)
- Listed Heritage Properties
- National Historic Site



“Rowanwood” (144 John Street) as featured in “Illustrated Niagara-on-the-Lake, Canada: engravings of some of her many attractions,” 1900 (Source: Brock University Archives).



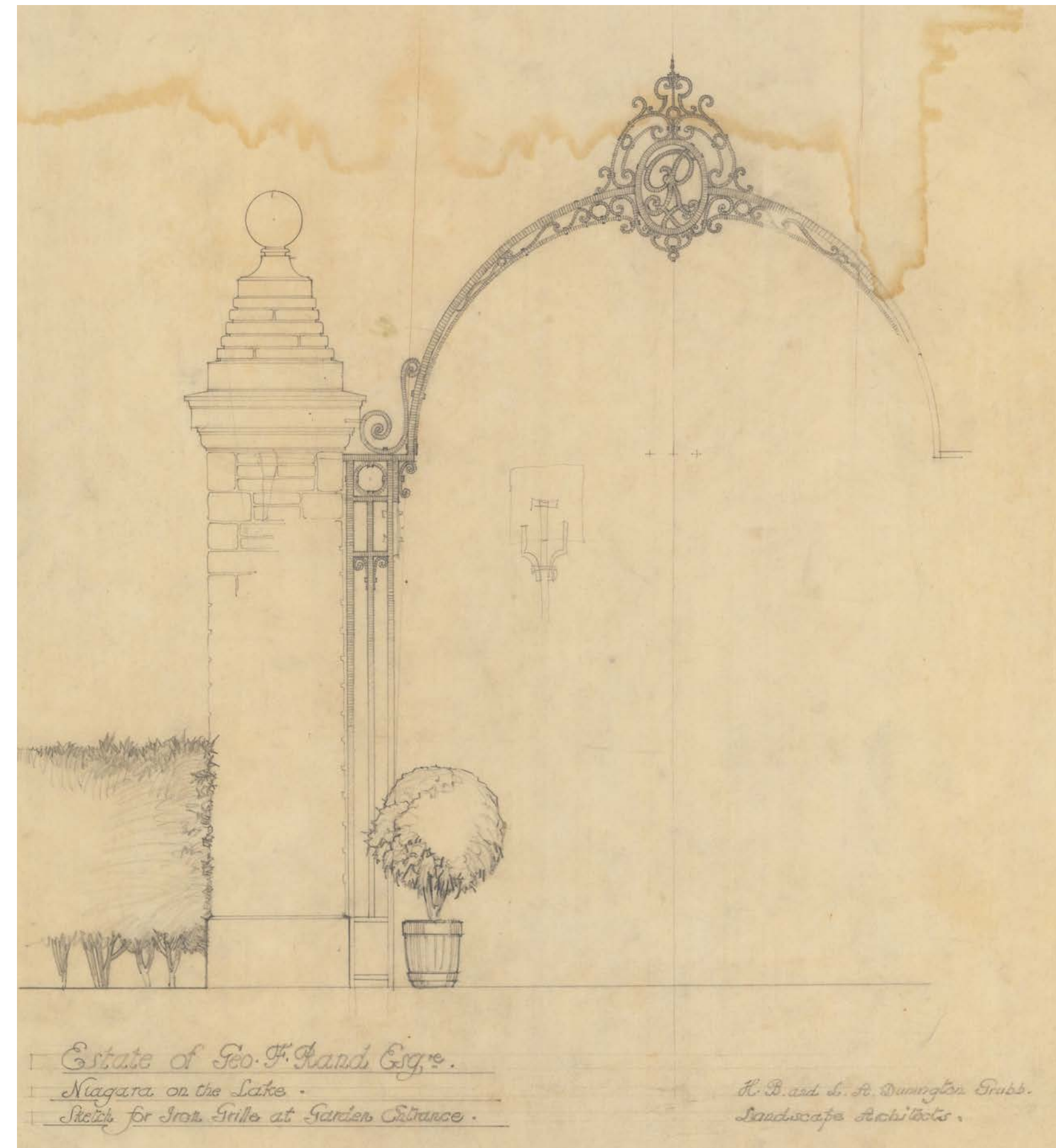
“Woodlawn” (176 John Street) as featured in “Illustrated Niagara-on-the-Lake, Canada: engravings of some of her many attractions,” 1900 (Source: Brock University Archives).



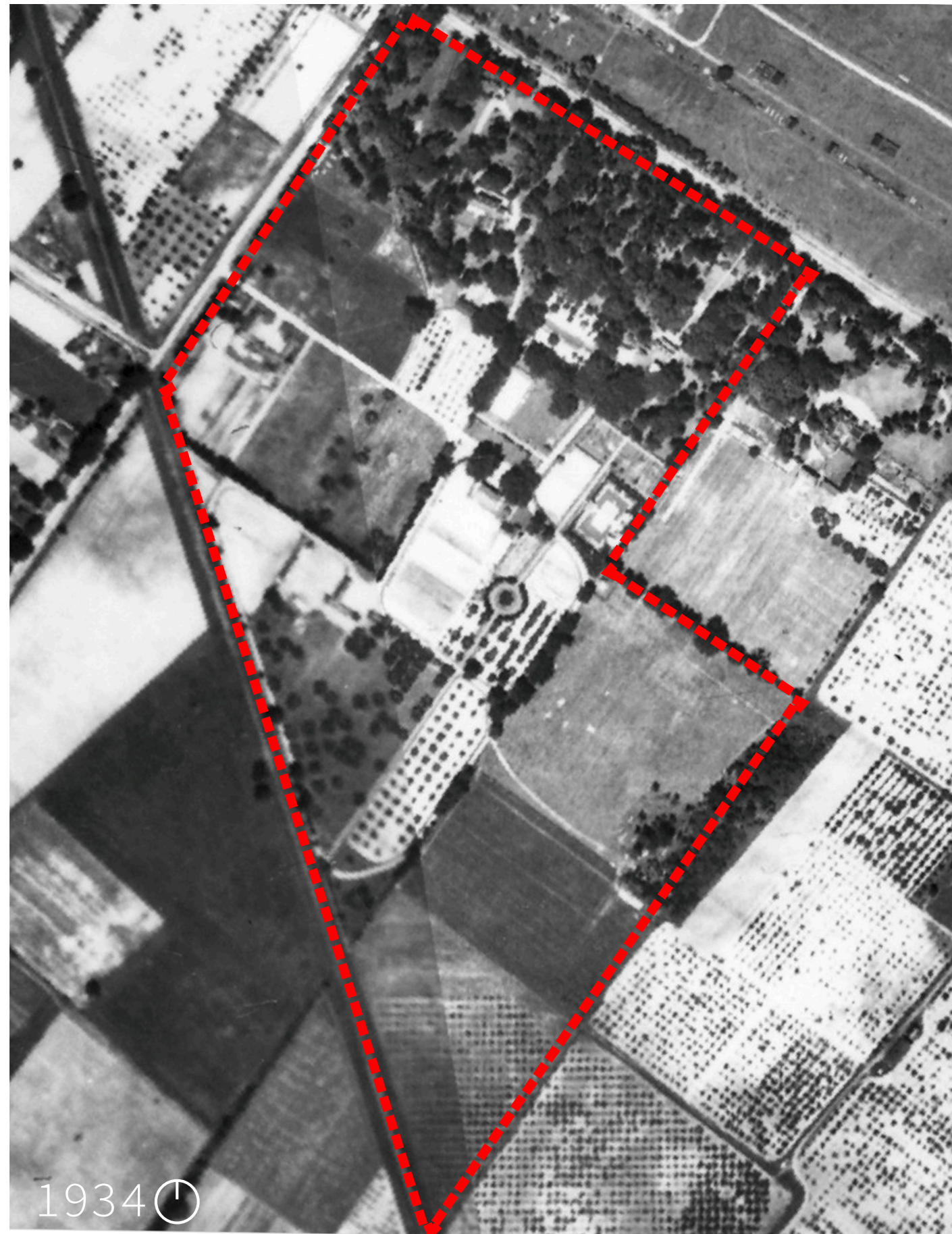
“Pinehurst” (210 John Street) as featured in “Illustrated Niagara-on-the-Lake, Canada: engravings of some of her many attractions,” 1900 (Source: Brock University Archives).



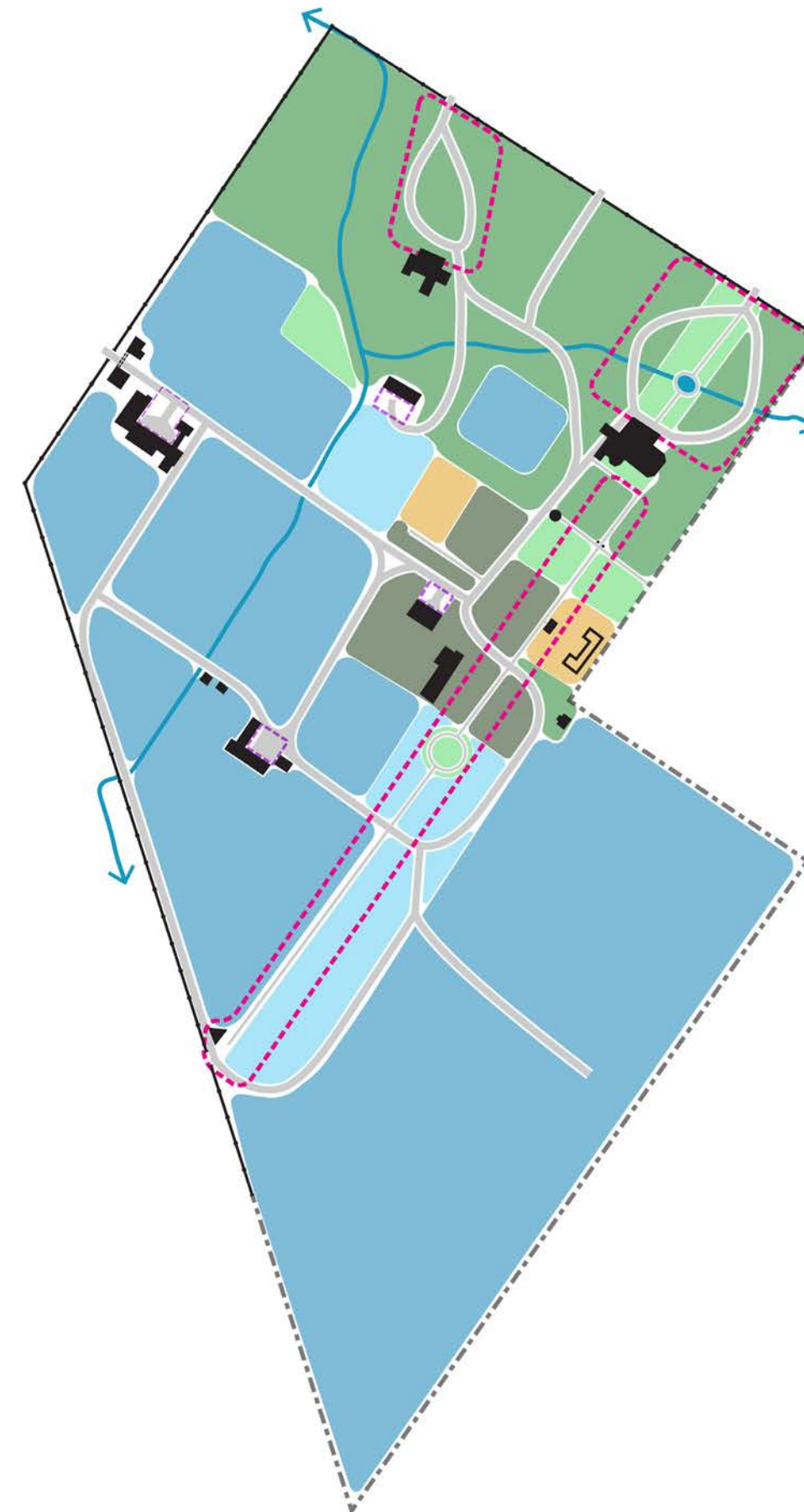
Howard and Lorrie Dunnington-Grubb, date unknown (Source: Royal Botanical Gardens Archives).



'Sketch for Iron Grille at Garden Entrance' by Howard and Lorrie Dunnington-Grubb for the Sunken Garden at Randwood (Source: University of Guelph Archives).



Aerial photo of the Rand Estate, 1934 (Source: Brock University/ERA).



Built Features

- Wall
- Structure

Ecological Features

- Creek / Tributary

Circulation

- Road
- Path

Dunington-Grubb Estate Zones

- Entrance Zones
- Service Zones

Pleasure Ground Zone

- Flexible Lawn
- Passive Park Like
- Formal Garden

Recreation Zone

Domestic Ground Zone

- Fields, Pastures, Paddocks
- Orchards
- Production Gardens

Plan representing land use on the estate between 1910 and the 1940s, based on a 1934 aerial photograph and research conducted to date.



View of the Sunken Garden and Main House at 176 John Street, date unknown (Source: Rand Family).



View of Tea House from pergola. Carriage House visible in background at centre of image, 1930 (Source: CCHHS Archives at the Royal Botanical Gardens).



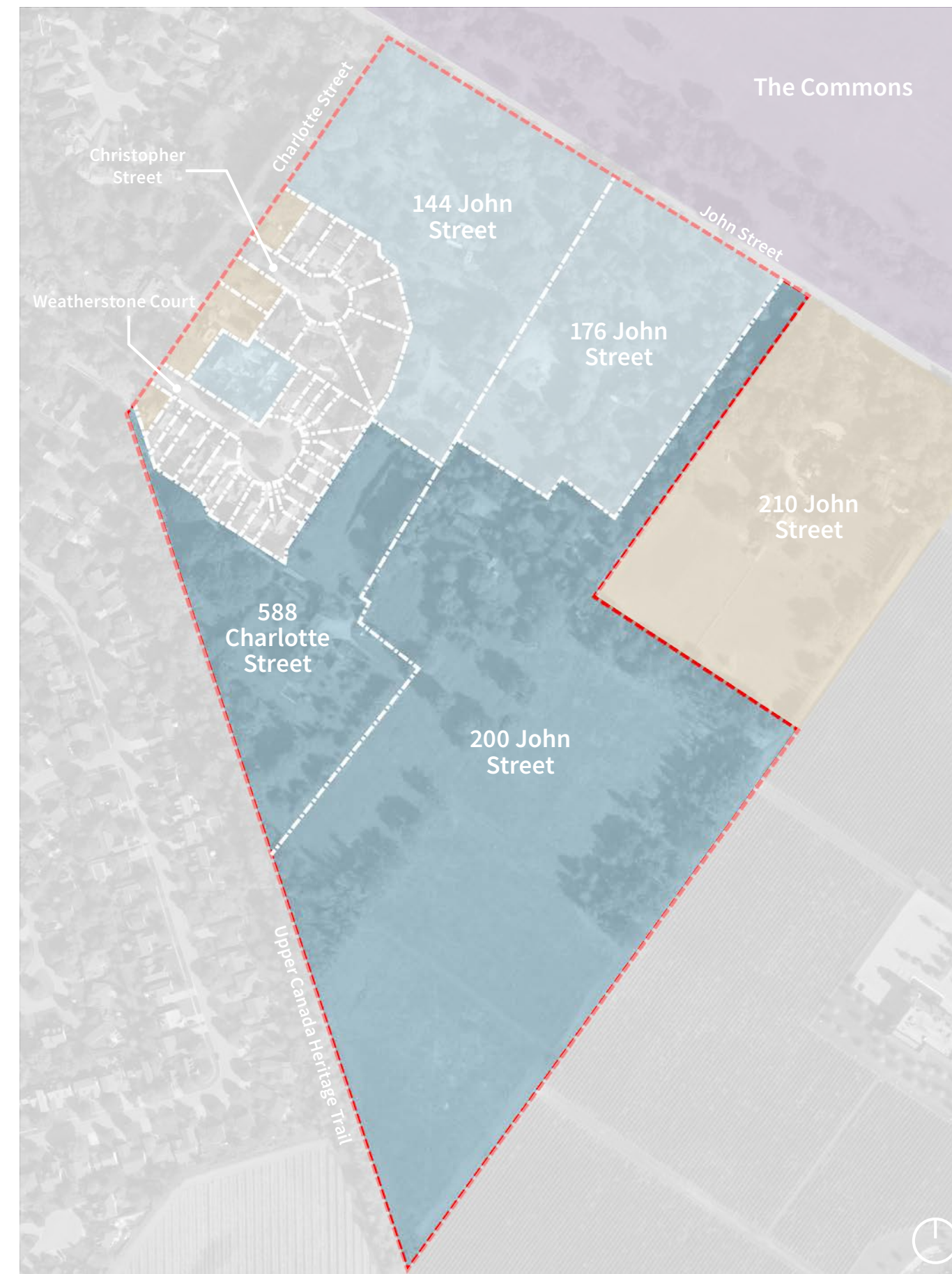
View south along Main Walk with the Calvin Rand Summer House visible in the background, date unknown (Source: Rand Family).



Prime Minister Pierre Trudeau and Indian Prime Minister Indira Gandhi at the Rand Estate, 1970s (Source: Rand Family).



Aerial photo of the Rand Estate highlighting the Subject Properties at 588 Charlotte Street and 200 John Street, 2018 (Source: Google/ERA).



Aerial map indicating heritage recognitions within and adjacent to the estate and highlighting the Subject Properties at 588 Charlotte Street and 200 John Street (Source: Google/ERA).

- - - - - Rand Estate Boundary
- Designated Heritage Properties (Part IV)
- Listed Heritage Properties
- National Historic Site



Landscape and Heritage Commemoration Plan included in 2022 Subdivision Application.



Combined plan showing Landscape and Heritage Commemoration Plan included in 2022 Subdivision Application and Site Plan included in 2018 Hotel Development Application.



The Calvin Rand Summer House and adjoining greenhouse prior to alterations, date unknown (Source: Rand Family).



The Calvin Rand Summer House after alterations, 2010 (Source: Rita Brown).



View of Barn and Stables during Dingman ownership, date unknown (Source: 'Cultural Heritage Evaluation Report' (2018) by Letourneau Heritage Consulting).



View of Barn and Stables during site visit in July 2020 (Source: Brendan Stewart).



Picturesque view of Change House looking east along service drive, 1980s (Source: Rand Family).



View of Change House in 2020, after landscape removals and alterations (Source: ERA).